

ANNE BYRNE
GARDEN DESIGN

WELCOME

WHAT'S IN THIS BROCHURE

Congratulations! By choosing to work with Anne Byrne Garden Design on your garden plans, you're one step closer to making your perfect garden a reality.

This brochure will explain how the process works and what your options are, and answer some of our most frequently asked questions.





Anne Byrne

WHY CHOOSE ANNE BYRNE GARDEN DESIGN?

When you choose to work with me at Anne Byrne Garden Design, you can rest assured that you (and your garden) are in safe hands. I can help you clarify exactly what you want, figure out what you need, and show you how to make both of these elements work wonderfully together in your particular space. I will bring my vision, experience and passion to your project to help you unlock the full potential of your garden. Trust me, that potential is there and we will unlock it together.

SOME OF MY CLIENTS ARE CONVINCED THAT I HAVE READ THEIR MINDS - BUT IT'S MORE ABOUT COMMON SENSE, CAREFUL LISTENING, VISUALISING WHAT'S POSSIBLE AND FIGURING OUT THE BEST WAY TO MAKE IT HAPPEN.

“THANK YOU ANNE BYRNE GARDEN DESIGN – WE ABSOLUTELY LOVE OUR PLANS AND CAN'T WAIT TO 'DIG IN'! WE GOT EVERYTHING WE WANTED AND WERE BLOWN AWAY BY YOUR VISION AND CREATIVITY – WE COULD NEVER HAVE DONE THIS WITHOUT YOU.”

UNA MCWOODS,
CO ROSCOMMON

HOW DOES THE PROCESS WORK?

The first thing we do is sit down together - often at your kitchen table - to discover exactly what it is that you need. Most people enjoy this part of the process, as it is a wonderful chance to really think about what your outdoor space needs to do for you and explore exciting possibilities.

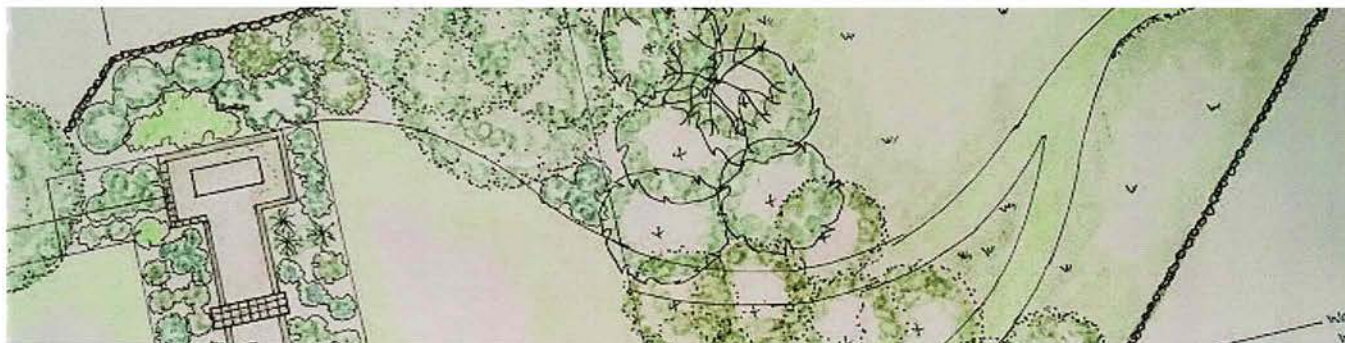
We'll cover any practical issues like parking, storage, maintenance, privacy, shelter and future uses of the garden for dining, relaxing, entertaining - and escaping! We will also consider ways for children, teenagers and garden users of all ages to enjoy and benefit from the garden.

Last but not least, we'll look at what appeals to you aesthetically. Some people have very definite ideas about this and others don't - it doesn't matter either way - my job is to help you figure out what will work perfectly for you.

Next on the list is to get to know the site by doing a walk-through, and taking measurements and photographs from every angle to use during the design process.

If you have an engineer's site plan I'm happy to work with that. We will also look at what surrounds the space. I'll often notice details at this stage that can inspire or inform the design.

THE DESIGN PROCESS THEN GETS UNDERWAY, IDEAS ARE CONSIDERED, REJECTED, ADOPTED OR ADAPTED, UNTIL I'VE FOUND THE BEST SOLUTIONS FOR YOU.



WHAT WILL I HAVE AT THE END OF THE DESIGN PROCESS?

The end result is a plan drawn to scale, showing every detail in the proposed garden design including paving, paths, steps, walls, boundary solutions and planted areas.

A separate planting plan is provided, as well as a document outlining other specifications - from paving choices to paint - and everything in between.

We then go through our new design plans together with images to illustrate concepts, so you can really see how these plans will work in your space

WHAT HAPPENS NEXT IS UP TO YOU - YOU CAN IMPLEMENT THE PLANS STRAIGHT AWAY - AND I CAN HELP YOU TO CHOOSE A LANDSCAPING CONTRACTOR - OR IN STAGES, AS TIME AND BUDGET ALLOWS.



WHY DO I NEED A PLAN?

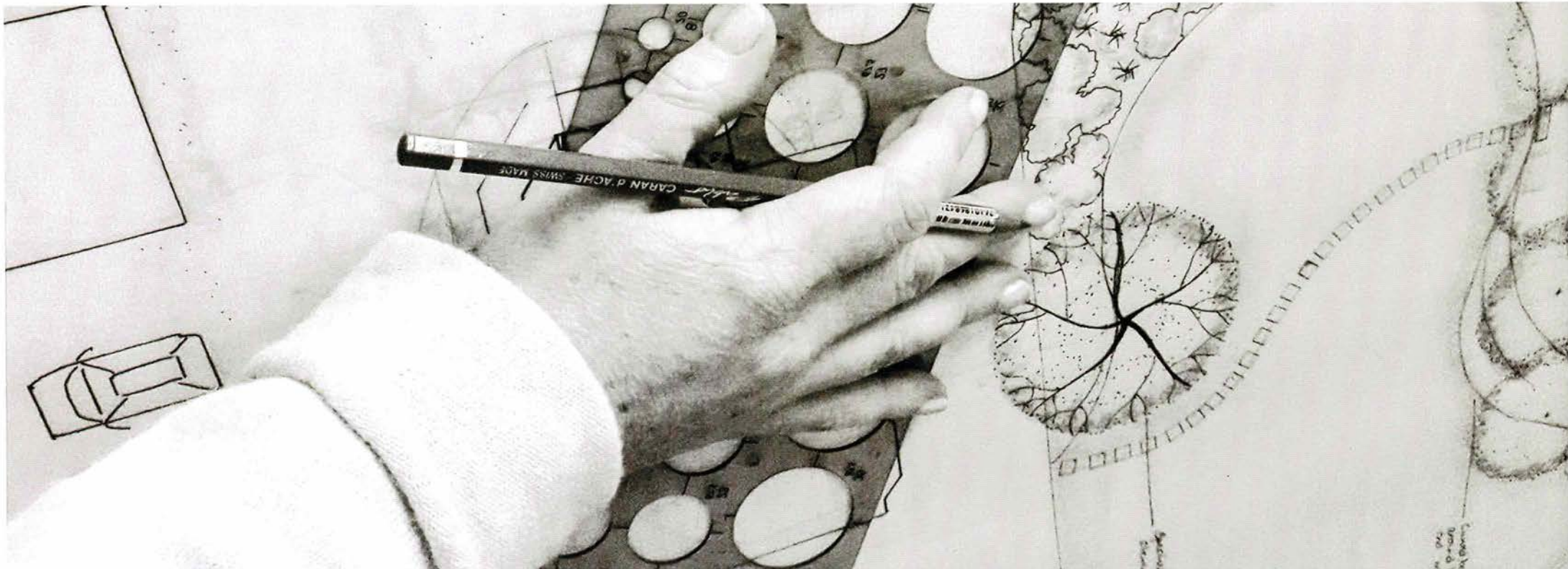
Once you have plans drawn to scale, anyone you ask to quote for groundworks, building and planting can quote easily, eliminating any guesswork and bringing complete clarity to the project, allowing you to compare like with like. You can also be certain that if you choose to undertake some parts of the project now and leave others till later, you are working towards a coherent plan that ultimately covers every aspect of your space. This allows you to avoid expensive mistakes and will give you peace of mind that your investment will form part of the ultimate perfect vision for your garden.

“WE GAVE A VERY CHALLENGING BRIEF TO ANNE, THAT HAD A LOT OF ELEMENTS TO TAKE INTO ACCOUNT AND ANNE LISTENED AND UNDERSTOOD OUR REQUIREMENTS AND DELIVERED ABOVE AND BEYOND WHAT WE EXPECTED. ANNE'S PLANS WERE DETAILED, IMAGINATIVE AND HER SERVICE WAS PARTICULARLY PROFESSIONAL.” CLIONA STANDUN, GALWAY



INVESTMENT – WHAT ARE YOUR OPTIONS?

The amount you'll need to invest in your garden design package depends mostly on three variables, garden location, size and the complexity of the project. I am always happy to agree costs with you at the outset so that you know exactly what to expect and I believe strongly in an open, straightforward approach, allowing you to make the most of your design budget.



DESIGN PACKAGE OPTIONS

BASIC CONSULTATION

WHAT'S INCLUDED

A consultation at your home, from 60 to 90 minutes, where you can ask questions and benefit from the knowhow of an R.H.S qualified horticulturist and garden designer.

This option is suitable for existing or mature gardens that need a minor tweak or two, where your planted areas are already laid out but you'd like to refresh or replant them.

Investment: from €350.

COMPACT GARDEN

The smaller the space, the harder every inch has to work for you, and a well considered plan will make that possible.

WHAT'S INCLUDED

A consultation at your home.

A site survey including measurements and photographs, scale drawings, design, layout plan, planting plan and specifications, mood board

A second meeting to take you through the plans. This option is suitable for courtyard gardens, roof gardens, 'town' sized gardens and gardens belonging to homes in developments or estates.

Investment: from €750

MEDIUM GARDEN

These gardens are bigger than a town garden, often extending to half an acre or more, often in detached or newly built homes.

WHAT'S INCLUDED:

A consultation at your home.

A site survey including measurements and photographs, scale drawings, layout plans (usually two), planting plans (usually two or more), mood boards (usually two) written specifications.

A second meeting to take you through the plans.

This option is suitable for medium to large sized gardens and new or existing gardens in any location - country, town or coastal.

Investment: from €1200

LARGE GARDEN

These gardens often extend to an acre or more, which can be quite daunting for a homeowner when you're wondering what to do with all that space!

WHAT'S INCLUDED:

A consultation at your home.

A site survey including measurements and photographs, scale drawings, (usually at least three or four), planting plans (usually several), mood boards (as required)

An interim meeting to discuss design concepts to reveal draft sketches.

A second meeting to take you through the finished plans.

This option is suitable for extensive properties, or medium sized properties on particularly challenging sites, as well as unusually complex projects.

Investment: from €2,000 - for larger and more complex gardens I quote on a project by project basis

BESPOKE OPTION

If you don't feel your project fits into any of the above categories and feel that you have particular requirements, are there another options? Of course there are! Every site is unique and poses its own challenges and every home owner has different requirements. We can easily come up with a solution that works for you – just get in touch!

“ANNE’S DESIGN TURNED A ROCKY UNEVEN SITE IN CONNEMARA INTO AN IMAGINATIVE AND STYLISH GARDEN WHICH FITS VERY WELL INTO THE NATIVE LANDSCAPE. WE WERE VERY IMPRESSED BY HER DESIGN SKILLS, ENTHUSIASM, WIDE KNOWLEDGE OF PLANTS AND HER METICULOUS ATTENTION TO DETAIL”

ANN AND BRIAN SPRING,
SPIDDAL, CO. GALWAY

DESIGN PACKAGE OPTIONS

BASIC CONSULTATION

WHAT'S INCLUDED

A consultation at your home, from 60 to 90 minutes, where you can ask questions and benefit from the knowhow of an R.H.S qualified horticulturist and garden designer.

This option is suitable for existing or mature gardens that need a minor tweak or two, where your planted areas are already laid out but you'd like to refresh or replant them.

Investment: from €350.

COMPACT GARDEN

The smaller the space, the harder every inch has to work for you, and a well considered plan will make that possible.

WHAT'S INCLUDED

A consultation at your home.

A site survey including measurements and photographs, scale drawings, design, layout plan, planting plan and specifications, mood board

A second meeting to take you through the plans. This option is suitable for courtyard gardens, roof gardens, 'town' sized gardens and gardens belonging to homes in developments or estates.

Investment: from €750

MEDIUM GARDEN

These gardens are bigger than a town garden, often extending to half an acre or more, often in detached or newly built homes.

WHAT'S INCLUDED:

A consultation at your home.

A site survey including measurements and photographs, scale drawings, layout plans (usually two), planting plans (usually two or more), mood boards (usually two) written specifications.

A second meeting to take you through the plans.

This option is suitable for medium to large sized gardens and new or existing gardens in any location - country, town or coastal.

Investment: from €1200

LARGE GARDEN

These gardens often extend to an acre or more, which can be quite daunting for a homeowner when you're wondering what to do with all that space!

WHAT'S INCLUDED:

A consultation at your home.

A site survey including measurements and photographs, scale drawings, (usually at least three or four), planting plans (usually several), mood boards (as required)

An interim meeting to discuss design concepts to reveal draft sketches.

A second meeting to take you through the finished plans.

This option is suitable for extensive properties, or medium sized properties on particularly challenging sites, as well as unusually complex projects.

Investment: from €2,000 - for larger and more complex gardens I quote on a project by project basis

BESPOKE OPTION

If you don't feel your project fits into any of the above categories and feel that you have particular requirements, are there another options? Of course there are! Every site is unique and poses its own challenges and every home owner has different requirements. We can easily come up with a solution that works for you – just get in touch!

“ANNE'S DESIGN TURNED A ROCKY UNEVEN SITE IN CONNEMARA INTO AN IMAGINATIVE AND STYLISH GARDEN WHICH FITS VERY WELL INTO THE NATIVE LANDSCAPE. WE WERE VERY IMPRESSED BY HER DESIGN SKILLS, ENTHUSIASM, WIDE KNOWLEDGE OF PLANTS AND HER METICULOUS ATTENTION TO DETAIL.”

ANN AND BRIAN SPRING,
SPIDDAL, CO. GALWAY

CHOOSING THE RIGHT DESIGNER FOR YOU

So you're considering engaging a garden designer - why should you choose Anne Byrne Garden Design?

That's easy – because nobody cares as much about your garden plans as I do. Not even you. Clients frequently comment on both the attention to detail in their plans – it's usually more than they were ever expecting and they're often delighted by the difference this new space will make to their lives.

They leave my office buzzing with information, full of excitement and eager to get started on making their plans a reality – often saying, as we shake hands, 'We're so glad we didn't try and do this by ourselves!'

I want to make your life easier, I want to show you the world of possibilities available even in the tiniest space and I want you to enjoy the whole design process, from the time we first meet to the day you leave my office with a full package of beautiful plans, created especially for you.

“FABULOUS WORK – THE PLANS ARE FANTASTIC AND YOUR PASSION AND FLAIR ARE WRITTEN ALL OVER THEM – WE LOVE IT!”

MARGARET & SEAN CREHAN,
CO ROSCOMMON

GETTING STARTED - WHAT TO DO NEXT

With most things in life, spending wisely on something of excellent quality that will suit you perfectly simply makes sense and is a wonderful investment.

I love to work with people who appreciate good design and believe in quality. I leave no stone unturned in the quest for excellence, because I simply won't put my name to something that's not the absolute best it can be.

I love to meet new clients and I love exploring new gardens (even if they are still building sites!) When you're ready to proceed, give me a call or email me and let's explore ideas together to find the perfect solution.

LET'S MAKE YOUR GARDEN DREAMS COME TRUE!



FREQUENTLY ASKED QUESTIONS

How does the process work?

This is covered in greater detail above, but in short - we meet, figure out what you'll love and, using measurements and site information, explore what is possible. I produce plans that can be implemented immediately or in stages, by yourself or by a professional contractor.

Do you implement the design?

Not usually – I focus on what I do best, which is producing beautiful plans for your individual needs. The groundworks and building can then be carried out by qualified contractors. I can provide you with contact details of recommended landscape contractors to carry out your plans.

Can you provide a tendering service and project management of the build?

Yes – just talk to me to find out more about this.

How long does the design process take?

Generally several weeks, although it could be longer for more complicated projects. If you need your plans urgently I'll see what I can do to help.

Can I build my garden in stages?

Absolutely! When you have your plans, you can implement them at your own pace, as time and budget allows. The plans help you to divide your garden project into manageable parts while giving you the confidence that when fully complete, those parts will form a coherent whole that does justice to your property.

I'm thinking of building or renovating – at what stage should I get the design process started?

As soon as possible. Having a plan for the outdoor space at the beginning – even if you don't want to build the garden yet – will help you during the construction process and allow you to make the most of any opportunities in relation to groundworks while you have manpower and machinery on site.

My house is under construction – is this a good time to think about garden design?

Yes, because knowing exactly how your outdoor space is to be shaped in the long term is particularly useful during the build. Also, potential savings and a better overall result can be achieved, by considering areas such as access, levels, and parking. Really savvy clients call me in at the planning permission stage.

FREQUENTLY ASKED QUESTIONS

Does Anne Byrne Garden Design take on projects in my area?

I'm based in the west of Ireland and many of the gardens I work on are here, particularly (but by no means only) in Galway, Clare, Mayo and Limerick but I have designed gardens all across Ireland and in the UK.

My budget is very small – do I still need garden design?

Yes, because investing in a well-designed plan will help you to maximise your budget. Part of my job is to make this happen. I am often hired by clients who have spent quite a lot on their gardens already but are still unhappy with the result. Investment in professional garden design pays for itself in terms of maximising your garden's potential and helping you to avoid expensive mistakes.

Is there a good time of year for starting a garden or to begin planting?

There are some rules about seasonal planting but don't worry, I'll go through this with you. Hard landscaping (i.e. building) can be done year round. The first thing you need is a completed set of plans and everything else follows. Remember that it can take several weeks to produce plans and there is usually a few weeks' wait for a consultation, especially at busier times of year.

Some landscapers offer a 'full design and installation service' – so is there any point in hiring a garden designer?

Yes, if you want your garden to be designed to suit you and your site, perfectly. If you want your individual needs and those of your family taken into account, if you want the best possible use made of every inch of space, and if you want creative ideas and original solutions from someone who has taken the time to get to know your needs and wishes down to each tiny detail. Also if you want the finished garden to look amazing!

What does garden design cost?

A number of design packages are available above. If you don't see something to suit your requirements, talk to me and we should be able to come up with a solution to suit you.

Can I see images of your projects?

Certainly – check my website, Instagram feed and Facebook page.

Can you advise me on sourcing materials?

Yes, that's part of the design process. I can provide details for paving, walling, fencing and all other parts of the project.

FREQUENTLY ASKED QUESTIONS

Can you also design the planted areas?

Absolutely – your plans include detailed planting plans for each and every area within the garden including trees, shrubs, hedges, perennials, ground cover and spring bulbs. Plants are chosen to appeal to you visually, factoring in your site, climate, shelter and soil situation. They will also be chosen to fit with your preferred level of maintenance.

I have absolutely no idea what I want to do with the garden – can you help me?

Yes. We'll start with the practical things, which helps me to build a picture of what you need, and then move on to the aesthetics. Your garden design will sit perfectly with your home and its surroundings, whether urban, rural or coastal!

“ THE MONEY SPENT ON OUR PLANS WAS THE BEST MONEY WE EVER SPENT - WE HAD PUT A LOT OF MONEY INTO OUR GARDEN OVER A 10 YEAR PERIOD AND IT NEVER LOOKED LIKE A PROPER GARDEN. WE NOW HAVE A PERFECT OUTDOOR SPACE THAT DELIVERS EXACTLY WHAT WE NEED FOR OUR FAMILY. ANNE TOOK THE TIME TO FIND OUT EXACTLY WHAT WE WANTED AND SHE MORE THAN DELIVERED, I COULDN'T RECOMMEND ANNE BYRNE GARDEN DESIGN HIGHLY ENOUGH. ” NOREEN COSTELLO, GALWAY



ANNE BYRNE
GARDEN DESIGN

Tel: 086 6838098

Email: anne.byrne05@gmail.com

ANNEBYRNEGARDENDESIGN.COM

